

# Nasopharyngeal (NP) specimen collection for COVID-19 testing

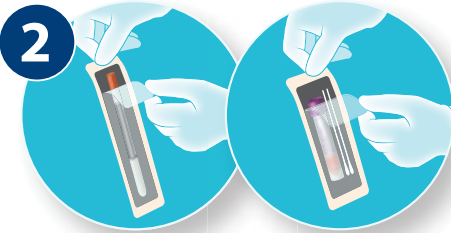
1

- Assemble the supplies needed. For sample collection, have the swab and viral transport medium, specimen label, and biohazard bag available.
- If the patient has a lot of mucus in the nose, this can interfere with collection. Have the patient use a tissue to gently clean the nasal passage before a swab is taken.



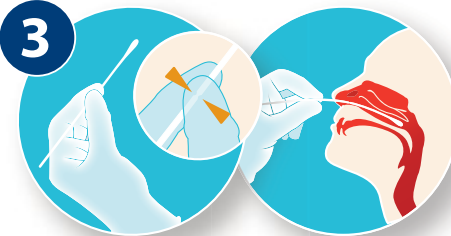
Depicted is an example of the supplies used to collect a nasopharyngeal specimen.\*

2



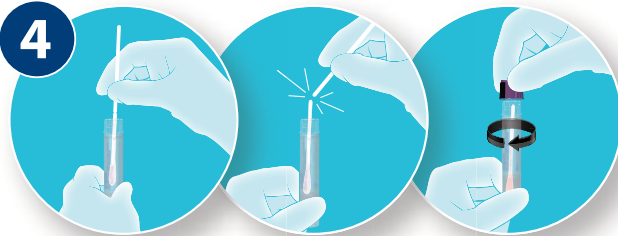
- Open the swab container and remove the swab, taking care not to touch the tip to any surface or lay it down.
- **DO NOT use the swabs that come with the viral transport medium kit.**

3



- Hold the swab with fingers placed on the score line. With the patient seated, if possible, tilt the head back 70 degrees, support the back of the head with your non-dominant hand.
- Gently insert swab into the nostril along the septum floor of the nose extending straight back **until the posterior nasopharynx is reached** (distance from nostrils to external opening of ear).
- Rotate the swab several times while the swab is in contact with the nasopharyngeal wall.

4



Place NP swab into the viral transport medium and break (snap) off swab at the indicator line. Replace cap and screw cap on securely.

5

- Label sample and place in biohazard bag.
- Freeze specimen and keep frozen.
- Submit sample on one requisition, with test code 139900 — COVID-19. Please include the patient's address, phone number and appropriate diagnosis code. To avoid delays in turnaround time when requesting multiple tests on frozen samples, please submit separate frozen specimens for each test requested.

**Storage Transport Condition** - Samples/specimens should be shipped frozen due to limited stability at -20° C (preferred); refrigerated specimens acceptable (if received for testing within 72 hours of collection). Refrigerated swabs submitted within 72 hours will be accepted.

\*Exact manufacturer of the swab and transport media may vary with supply. Any swab of appropriate size and configuration with a synthetic tip can be used, **EXCEPT** for calcium alginate tips, swabs with preservatives, and swabs with wood shafts. Viral transport media acceptable for collection of influenza specimens in 1 mL or 3 mL volumes can be used to transport swabs for COVID-19 testing.

# Oropharyngeal (OP) specimen collection for COVID-19 testing

1

Assemble the supplies needed. For sample collection, have viral transport medium with included swabs, specimen label and biohazard bag available.

2

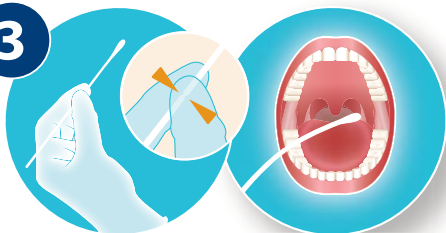


Open the viral transport medium package and remove one swab, taking care not to touch the tip to any surface or lay it down.



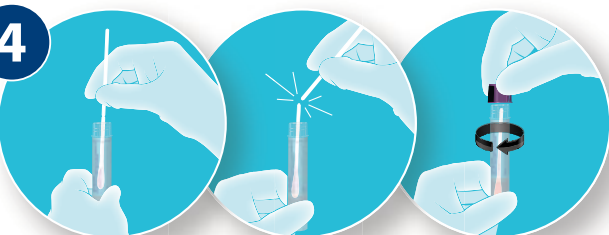
Depicted is an example of the supplies used to collect an oropharyngeal specimen.\*

3



- Hold the swab with fingers placed on the score line.
- Gently insert swab into back of the throat and tonsillar area. Rub the swab over both tonsillar pillars and the posterior oropharynx; avoid touching the tongue, teeth, and gums.

4



Place swab into the viral transport medium and break (snap) off swab at the indicator line. Replace cap and screw on securely.

5

- Label sample and place in biohazard bag.
- Freeze specimen and keep frozen.
- Submit sample on one requisition, with test code 139900 — COVID-19. Please include the patient's address, phone number and appropriate diagnosis code. To avoid delays in turnaround time when requesting multiple tests on frozen samples, please submit separate frozen specimens for each test requested.

**Storage Transport Condition** - Samples/specimens should be shipped frozen due to limited stability at -20° C (preferred); refrigerated specimens acceptable (if received for testing within 72 hours of collection). Refrigerated swabs submitted within 72 hours will be accepted.

\*Exact manufacturer of the swab and transport media may vary with supply. Any swab of appropriate size and configuration with a synthetic tip can be used, **EXCEPT** for calcium alginate tips, swabs with preservatives, and swabs with wood shafts. Viral transport media acceptable for collection of influenza specimens in 1 mL or 3 mL volumes can be used to transport swabs for COVID-19 testing.



[www.LabCorp.com](http://www.LabCorp.com)