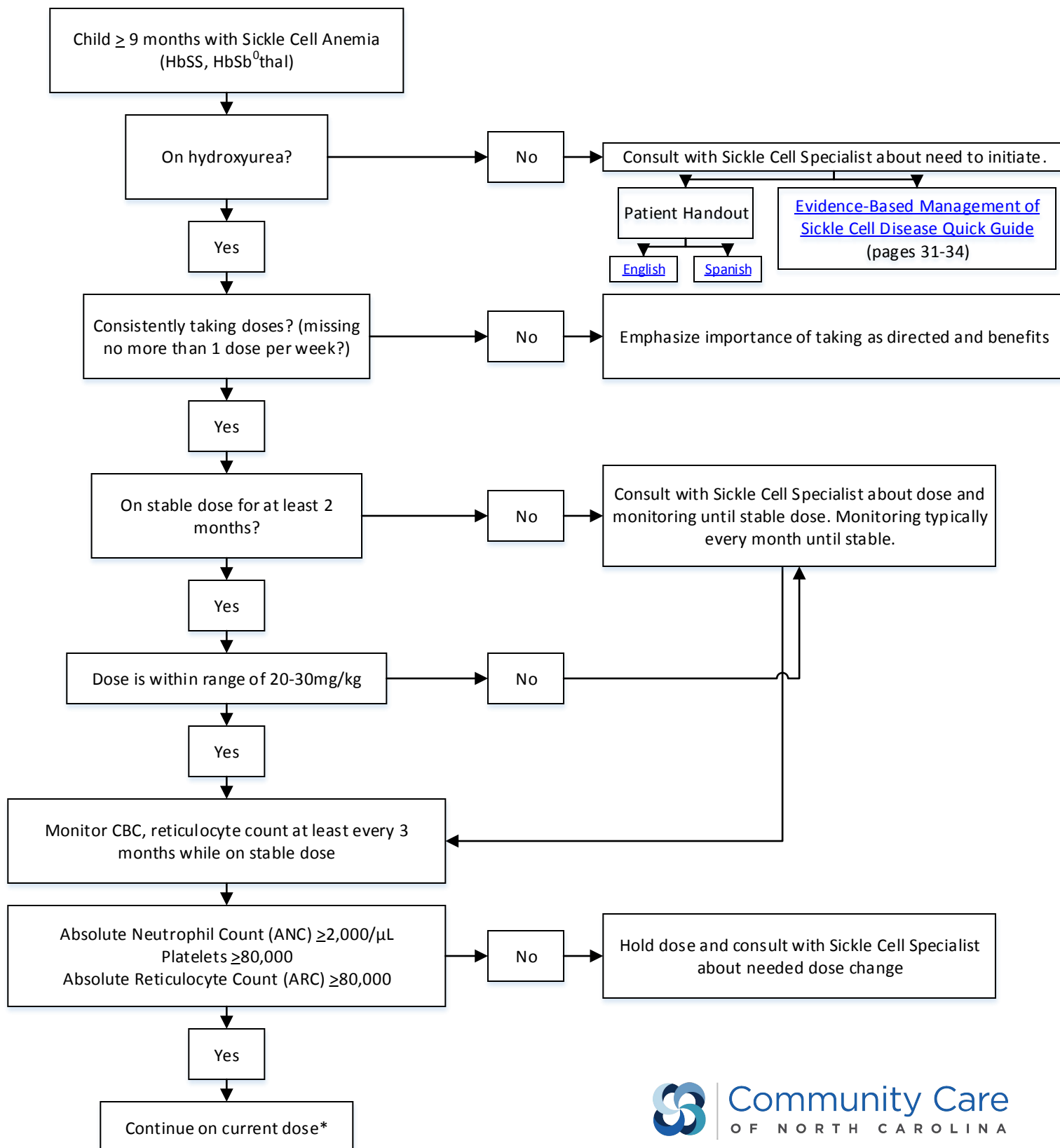


# Co-managing Hydroxyurea\* monitoring for Pediatric Patients with Sickle Cell Anemia



**\*Hydroxyurea is a teratogen.** Reproductive Planning is very important. Discuss recommendation for Long Acting Reversible Contraceptive (LARC) for adolescent females if on Hydroxyurea. Progesterone-only contraception may be preferable. Current recommendation is to discontinue Hydroxyurea for men and women before a planned pregnancy and for women while breastfeeding.

Developed by Community Care of North Carolina, the NC Division of Public Health; the comprehensive sickle cell centers at Carolinas Health Care, Duke University, East Carolina University, University of North Carolina at Chapel Hill, Mission, and Wake Forest University; and primary care physicians from across NC. Adapted from the 2014 NIH/NIHBI guidelines for Evidence-Based Management of Sickle Cell Disease.