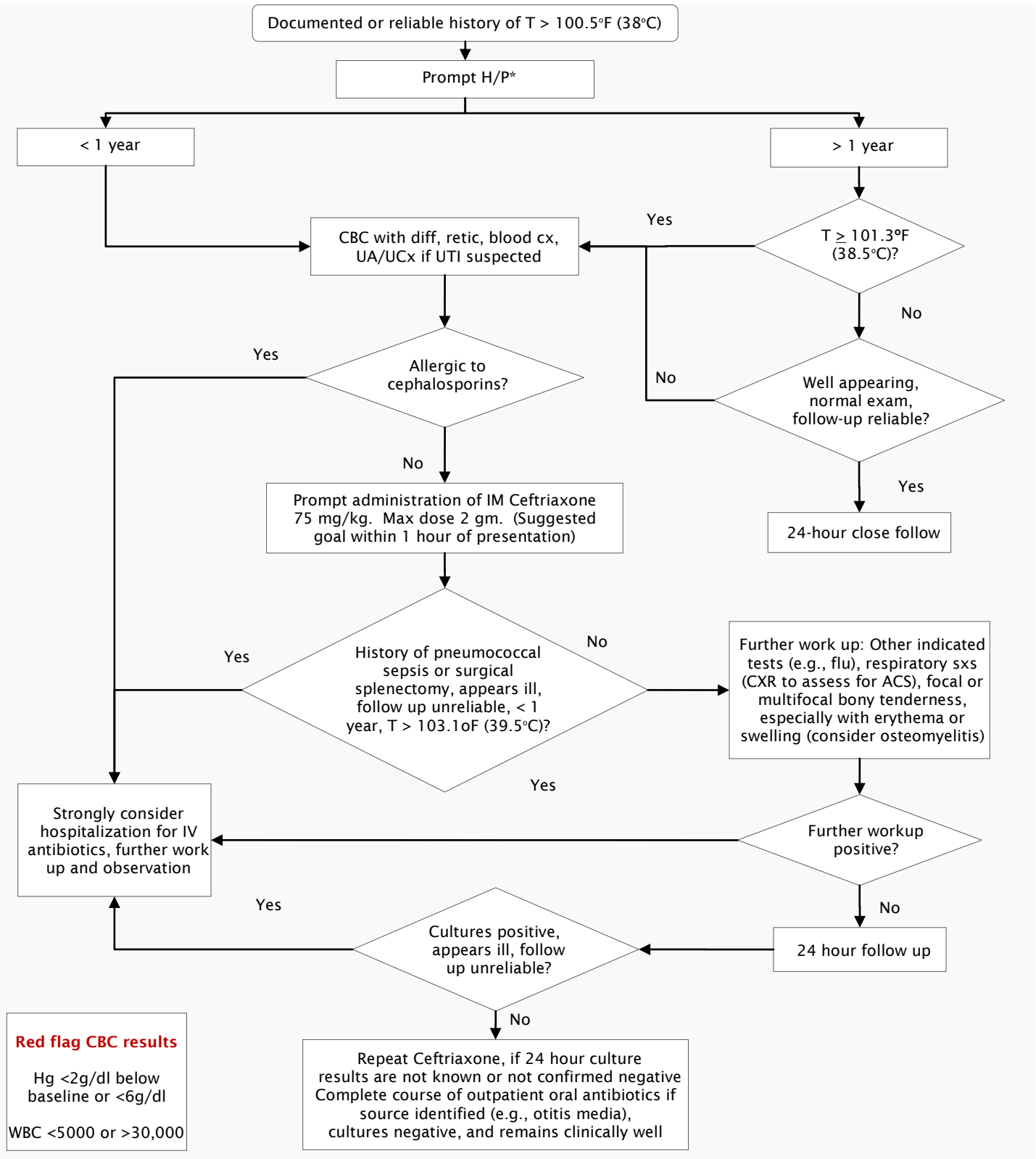


Fever in Children with Sickle Cell Disease

Developed by the NC Division of Public Health; the comprehensive sickle cell centers at Carolinas Health Care, Duke University, East Carolina University, University of North Carolina at Chapel Hill, Mission, and Wake Forest University; and primary care physicians from across North Carolina. Adapted from the 2014 NIH/NIHBI guidelines for Evidence-Based Management of Sickle Cell Disease.



*If prompt office evaluation is not possible, consider evaluation in Emergency Department.